

think package... think CRT...

The Ultimate Source For All Your Packaging Needs

Design Engineering



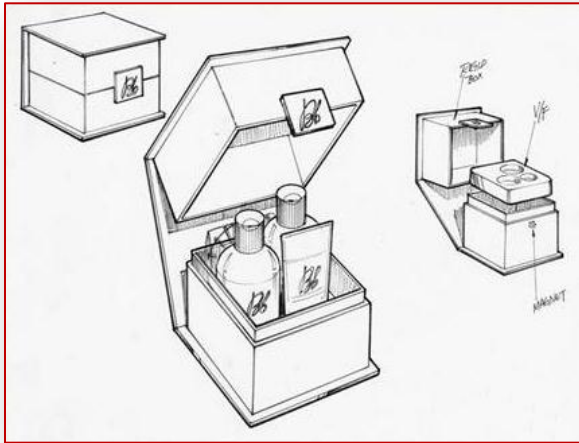
CNC Machines

- ***CRT utilizes the most advanced graphic design and engineering technology available in our industry.***
- ***CRT gives our clients a strong competitive edge right out of the box, eliminating the need for preliminary samples .***
- ***Rapid project turnaround time.***

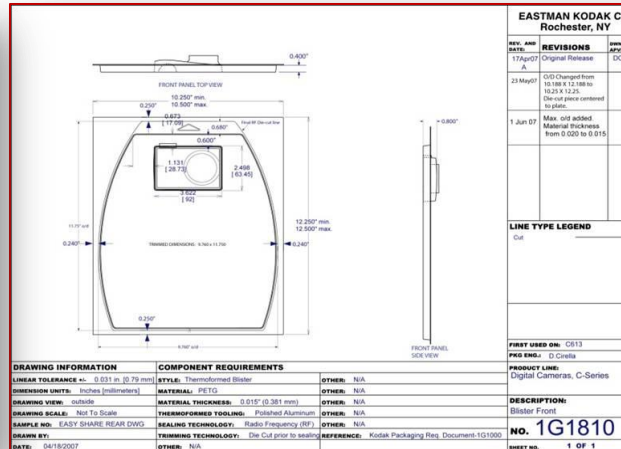


Machined tools

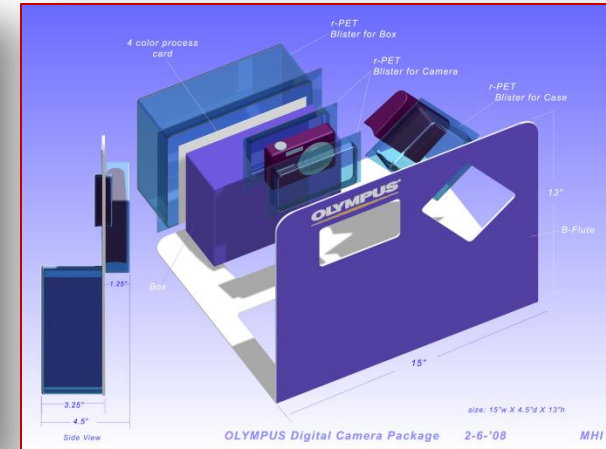
Design Engineering Presentation



CONCEPT SKETCH



ENGINEERING DRAWING



EXPLODED VIEW

- **Dynamic modeling and visualization helps us create photo realistic images of your packages.**
- **We can save you time and money by allowing changes and modifications before you go to prototype.**



3-D RENDERING

Custom Thermoforming Machines



- ***Thermoformers – DT Sencorp Model 2500***
- ***Prototype Thermoformers***
- ***In line thermoformers are capable of handling sheet size up to 38".***
- ***Fully automated and computer-controlled, to produce accurate, high-speed pressure over vacuum-forming using .007 to .080-mil stock.***
- ***Servo drive indexing - with a fine tolerance of 15/1,000" - allows us to make precision modifications, affording a greater degree of accuracy .***



Rigid Set Boxes



- ***Full capability from design to full distribution.***
- ***Computer controlled automatic gluers.***
- ***Semi and full automatic shrink wrap system.***
- ***FMC semi-automatic box maker.***
- ***Emmeci fully automatic machine.***
- ***Prototype capabilities for complete presentation comp.***



Contract Packaging



- ***We provide full service for packaging and mailing.***
- ***Fully automated labeling, inserting and shrink-wrap systems, inventory tracking reports, In-line fulfillment of thermoforms and rigid set boxes.***
- ***Special complex fixtures for hot stamping both one-and two-level forms.***
- ***Hot stampers utilize hydraulic oil over hot air machines to ensure consistently superior image quality.***



Contract Packaging R/F Sealing



- ***RF sealing lines***
- ***Radio Frequency sealing and blister sealing to including insert cards and component parts.***
- ***From initial concept to collation and assembly we go the extra mile to make certain everything runs smoothly and your project accomplishes your objectives.***

Point of Purchase Display Retail Environments

- ***Retail and point-of-purchase.***
- ***CRT helps to magnify your selling power through compelling customized displays that really showcase your product in a creative and cost effective manner.***
- ***CRT provides you with all the services you need, complete design, engineering and prototype capabilities to ensure that your final display satisfies all your marketing needs.***
- ***CRT can customize your retail environment to help you develop a unique space that stops traffic, supports sales, and get people talking about your product.***



In a world where business moves fast and your competition moves even faster, you need every competitive advantage you can get. That's why you need the services of CRT.

CRT gives you the solution for all your packaging needs. With our integration and horizontal scope, we can save you time and money by combining all the services you need: design, manufacturing, and assembly. CRT is a leader in creating integrated packaging for top brands in cosmetics, fragrances, and H.B.A. personal care.

Our specialties include rigid set boxes, thermoforming, contract packaging and R/F Sealing.

CRT adds value at every stage of the process to control costs, improve market launch timing, and help increase your sales. Our fully secured and monitored facility provides state-of-the-art manufacturing. The result is quality you can count on from concept to delivery.

The Ultimate Source For All Your Packaging Needs.

P: 201.887.7737 F: 201.887.7331

www.crt-inc.com